



ELF Bathrooms



ELF Bespoke Bathrooms
Individually designed and built

Valid from Jul 2011

ELF Bathrooms

ELF is renowned for its stunning modern furniture which features in many specialist publications around the world.

This catalogue presents ELF Bespoke Bathrooms, including the Elite range, which mirrors the latest trend in bathrooms, and features the pottery of Carol Mann and Avon, and the glassware of Ray Storey. Some of these are now available in kit form, and can be found under Bathroom Kits on the website.

Our Classic range and Series 21 offer a comprehensive range of styles and finishes, whilst the Compact range includes units suitable for the smallest of spaces, all featuring porcelain by Lenham Pottery.

Most ELF bathroom units have fully opening doors and drawers, and basins and baths have fittings in either chrome or gold-plated finish, to match your choice of taps. The units are all individually made and hand-waxed to a beautiful finish.

If you would like help and advice in planning your bathroom, remember our planning service is free and without obligation.

Photographs at the top of the page: top left, asymmetrical unit with bowl by Carol Mann, £70, top right, Classic Vanity unit in cream with hand-painted faux-marble top and basin by Lenham Pottery, £130, bottom, complete bathroom project, with recessed cabinets in a false wall, on which is also mounted the toilet (by Lenham Pottery). Also featured, a Japanese style wooden bath and walk-in shower, and an open vanity unit (bowl by Carol Mann). This bathroom shows how it is possible to create a luxury bathroom even in a loft space where ceiling height may be limited. Guide price for a similar bathroom £350.

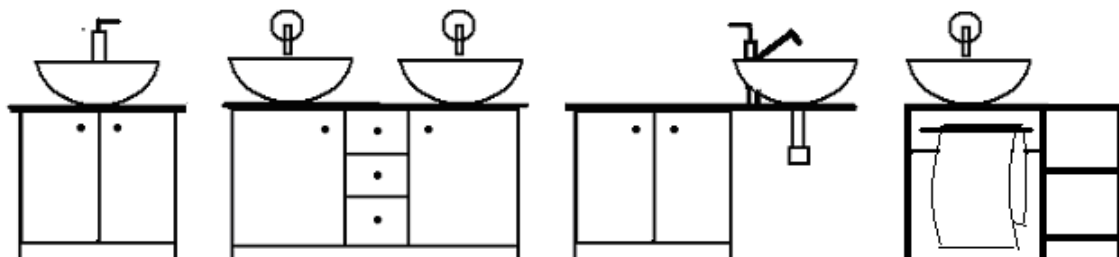
ELF Miniatures

11 Northbrook Crescent, Basingstoke, RG24 9RB, England Tel ++44 (0)1256 358916

www.elfminiatures.co.uk Email: elfminiatures@hotmail.co.uk

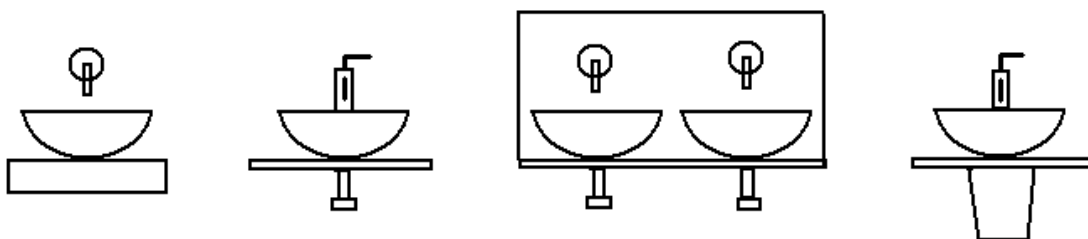
ELF Bathrooms – The Elite Range

This range reflects the latest trends in bathroom design and features blown glass basins by Ray Storey and porcelain bowls by Avon, or pottery by Carol Mann. The glass basins are available clear or frosted. Carol uses a variety of glazes while most of our units feature white bowls by Avon. **Some units are now available in Kit form** (see website).



| | | | |
|--------------------------|------------------------|-----------------------|-------------------|
| E1. Single Unit 2 ¾ " w. | E2. Double Unit 4½ " w | E3. Asymmetrical 5" w | E8 Open unit |
| Glass £45 | Glass £110 | Glass £55 | Glass £40 |
| White Ceramic £45 | White Ceramic £110 | White Ceramic £55 | White Ceramic £40 |
| Carol Mann £55 | Carol Mann £130 | Carol Mann £65 | Carol Mann £50 |

These units are available in lightwood, Wenge (chocolate brown) or cherry. In lightwood, doors and drawers can be painted in any colour of your choice, should you prefer. Choose wall mounted taps or base mounted monobloc tap.



| | | | |
|------------------------|--------------------------|-----------------------|---------------------------------|
| E4. Deep shelf 2 ½ " w | E5. Single shelf 2 ½ " w | E6. Double shelf 5" w | E7. Shallow shelf + half column |
| Glass £25 | Glass £30 | Glass £55 | Glass £35 |
| White Ceramic £25 | White Ceramic £30 | White Ceramic £55 | White Ceramic £35 |
| Carol Mann £35 | Carol Mann £40 | Carol Mann £75 | Carol Mann £45 |

The deep shelf (E4) is available in light wood, wenge or cherry. E5/6/7 are available in lightwood, Wenge, cherry, black granite or white marble (black and white options are laminates). Choose wall mounted taps or base mounted monobloc tap. The matching splashback is optional.

Elite units can be combined with storage units from our Series 21 range (wall mounted or with extra side panels).

Units with wall-mounted taps are approximately 1 ⅝" deep

Units with base mounted taps are approximately 1 ⅞" deep.

All prices are in £ sterling. For price conversions go to www.xe.com/ucc

ELF Bathrooms – The Elite Range



Unit E6 shown in black granite (left) and cherry (right), both with bowls by Ray Storey. (£55)



E5 shelf in white marble with bowl by Carol Mann

£40



E7 shelf in cherry and bowl by Carol Mann

£45

This unit is a variation on E2, with panels in Silky Australian Oak and a pull out laundry basket in place of drawers. (£130)



On the left is unit E1 in Wenge (bowl by Carol Mann, £55) On the right is an extended version of E2 in cherry, with bowls by Carol Mann. (£190)



All units are available with a choice of wall or base-mounted taps.

ELF Bathrooms – Classic and Series 21

The Classic range, Series 21, and the Compact Range all feature the porcelain of Lenham Pottery.

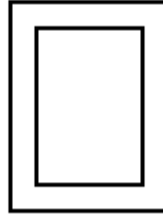
Full details and prices for the Classic and Series 21 ranges are on P 7 and 8.

The Classic Range

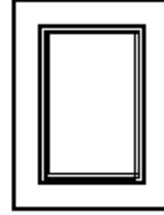
This comprehensive range of units available in a variety of finishes, will enable you to create the perfect bathroom.



Plain



Shaker



Classic

Choose plain, shaker or classic doors in lightwood, cherry (plain or shaker) or Wenge (chocolate brown – plain only). Alternatively, units can be painted in any colour of your choice. Decide which vanity top suits your choice of units and add drawer and door knobs in brass, chrome, natural wood, or painted to coordinate or contrast with the units. Taps and fittings are available in a choice of chrome or gold-plated. Classic units are mounted on a plinth. Below is a combination of classic units with plain doors, which give a smooth clean line to the bathroom. (Complete bathroom as shown (excluding accessories) £340.



Series 21

These units have a clean contemporary feel. In lightwood with sleek modern doors and drawers highlighted in the colour of your choice (some or all of the doors can be left in light wood if you prefer). The units can be wall mounted, or the side panel extended to form supports for the unit. All fittings are in chrome. It is possible to create a huge variety of fitted bathrooms with these units. If you would like help in planning your bathroom, remember our planning service is free and without obligation.

Classic and Series 21



£195



Left, a Classic unit in cherry, with integral mirror and concealed lighting (£145).



Classic unit with classic doors in white with hand-painted, faux marbre top.

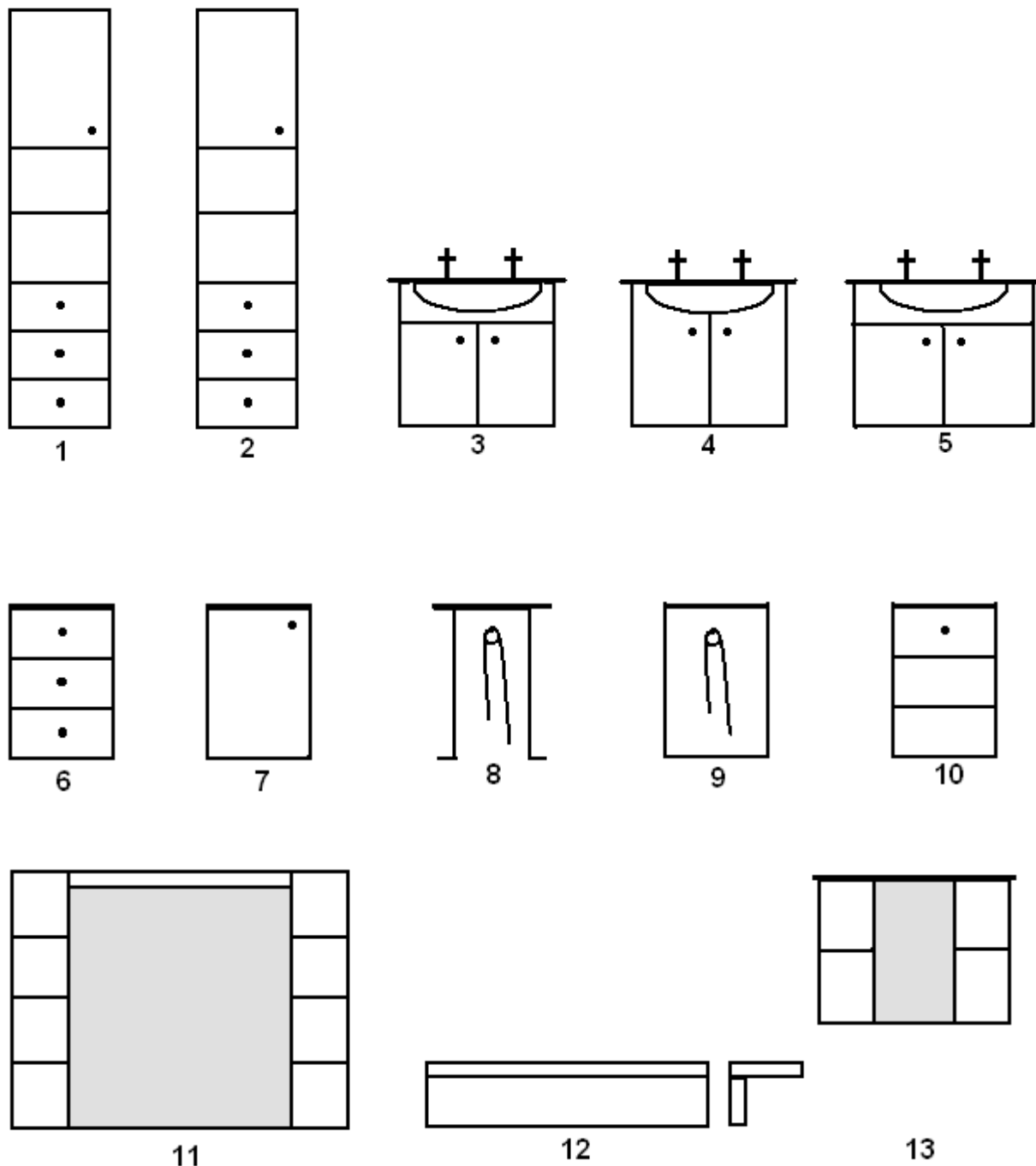
£145



Left, a Classic unit with plain doors in blue (£120), and on the right, a Series 21 unit with extended sides and doors in pale grey (£80).



ELF Bathrooms – Classic and Series 21



All units are shown without plinth. The Classic range has a plinth $\frac{3}{8}$ " high. Series 21 can be wall mounted approximately $\frac{1}{2}$ " from the floor, or have extended side panels forming supports for the unit (see photo on previous page).

Column units and base units without basins may be used singly or combined to form freestanding bathroom storage solutions.

Units 6, 7 or 10 can be mounted on castors to form a mobile storage unit.

All units are approximately $1 \frac{1}{2}$ " deep. Basins extend to a total depth of $2 \frac{1}{8}$ "

ELF Bathrooms – Classic and Series 21 price list

| | | Classic | Classic panelled | Series 21 |
|-----|--|---------|------------------|-----------|
| 1. | Column + Cupboard, Drawers and Shelves, 1 ¼ " | 55 | 75 | 55 |
| 2. | Column + 2 Cupboards and Shelves, 1 ¼ " w | 40 | 60 | 40 |
| 3. | Basin Unit – 2 ¼ " w | 70 | 80 | 70 |
| 4. | Basin Unit + Shaped Doors 2 ½ " w | 80 | N/A | 80 |
| 5. | Basin Unit 3 ½ " w (3" if flanked by columns) | 70 | 80 | 70 |
| 6. | Base Unit + Drawers 1", 1 ¼ ", 1 ½ " w | 35 | 40 | 35 |
| 7. | Base Unit + Cupboard 1", 1 ¼ ", 1 ½ " w | 20 | 25 | 20 |
| 8. | Towel Rail Series 21 | N/A | N/A | 10 |
| 9. | Towel Rail Unit ¾ " w | 20 | 20 | N/A |
| 10. | Base + One Drawer + Open Shelf | 20 | 25 | 20 |
| 11. | Tall Mirror + Shelves + Lighting | 35 | 45 | N/A |
| 12. | Low Back Panel + Shelf | 10 | 10 | N/A |
| 13. | Wall Unit + Shelves + Mirror 2 ½ " w, x 1 ½ " h x ½ " d | 20 | 25 | 20 |

IMPORTANT:

Units 3 and 4 require other base units on either side. If you want a free standing basin unit, or a basin unit flanked by columns with no other units, you need to order Unit 5.

Classic Units comprise plain doors and cabinets in natural wood or painted in the colour of your choice. Classic panelled cabinets comprise panelled doors and end panels (Shaker or Classic panelling) in natural wood or painted in the colour of your choice.

Prices are correct as of Dec 2008, and may be subject to alteration as and when costs increase.

All prices are in £ sterling. For easy conversions go to www.xe.com/ucc

ELF Bathrooms – the Compact Range

The units in this range feature a smaller oval basin, which allows the creation of very compact units suitable where space may be very limited. Alternatively two basins may be used together to create an impressive double vanity unit.



C1 Compact vanity unit 2" x 2" x 2 ½" H

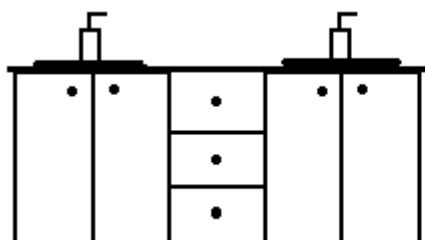
Plain £50

Panelled £55

C2 Corner vanity unit 2" x 2" x 2 ½" H

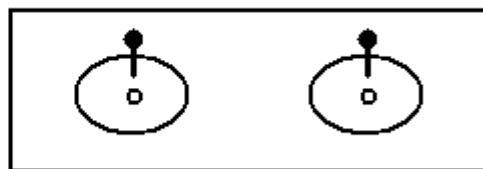
Plain £60

Panelled £70



C3 Double vanity unit with inset basins

Plain £135, panelled £150 (with fixed doors plain £95, panelled £110)



These units can be wall mounted and combined with Series 21 storage units or finished in the Classic style, mounted on a plinth (see below right) and combined with storage units from the Classic range.

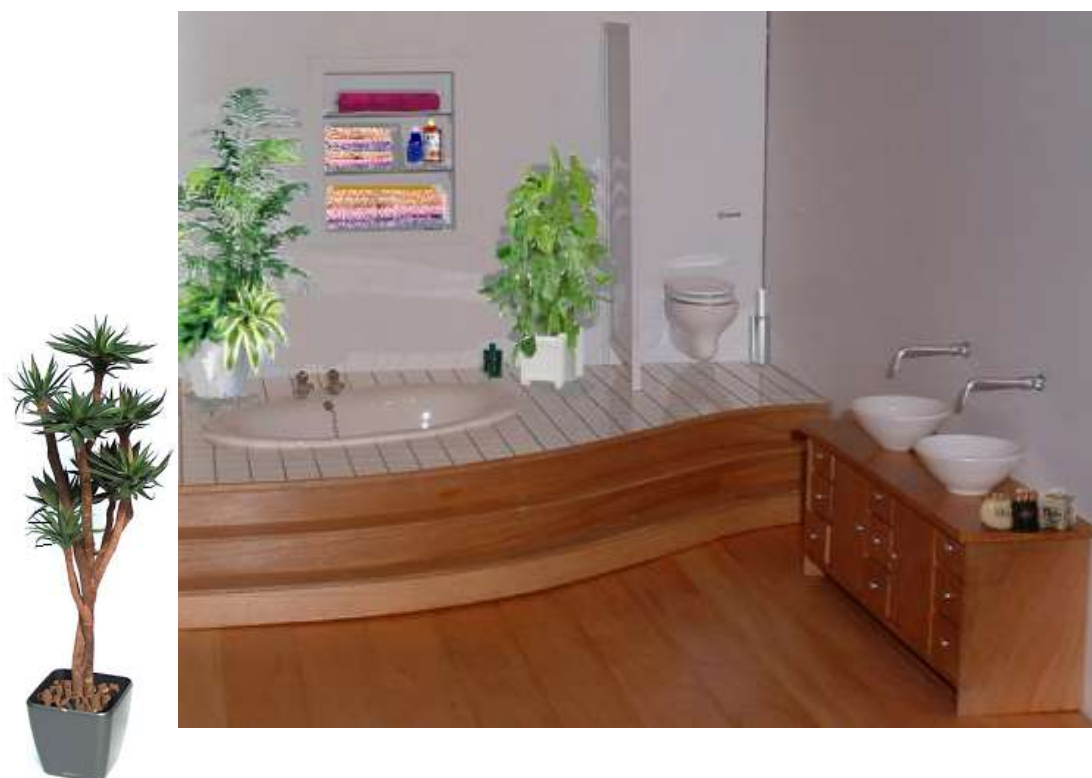
Choose plain, Shaker or Classic doors in light wood, cherry, wenge or painted in the colour of your choice. To match the Series 21 units, choose a light wood frame with doors and drawers highlighted in a contrasting colour or colours. Select a vanity top from the range shown and add your choice of handles (see Classic range).



ELF Bathrooms - projects

In the 21st century the bathroom has become the focus of designers, and for the miniaturist, ELF offers the possibility of creating the bathroom of your dreams. Whether you favour opulence or minimalism, you will find all you need to create the right 'look'. If you are lost for inspiration, why not browse through a few of the catalogues or magazines widely available at every newsstand. And remember that we offer a design service which is free and without obligation.

Although we offer a very comprehensive range of standard units, we also make cabinets of differing sizes where these may be necessary to fit a specific area, or to replicate your own full-sized bathroom. Please do not hesitate to contact us with any query you may have. If you have a large room, you may like to consider something more unusual, such as the sunken bath shown in the photograph below. The room features a split-level floor, with bold curved steps in cherry leading to an extensive white tiled area with the sunken bath. There is also a "false" back wall with recessed shelving, a wall-mounted toilet separated by an etched glass screen, and in the foreground an imposing double vanity unit in cherry with bowls by Carol Mann (bath and toilet by Lenham Pottery).



Please note that all our miniatures are intended for adult collectors and are not suitable for children under the age of 14 years in accordance with EU regulations.

All prices are current at July 2011, and subject to alteration as and when costs increase.

For Baths, Showers, Toilets and accessories, see separate leaflets.

ELF Miniatures

11 Northbrook Crescent, Basingstoke, RG24 9RB, UK. Tel. ++44 (0)1256 358916

www.elfminiatures.co.uk Email: elizabeth@elfminiatures.co.uk

ELF Bathrooms – Vanity tops



Light Wood



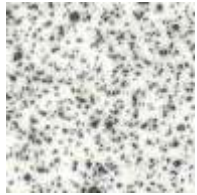
Cherry



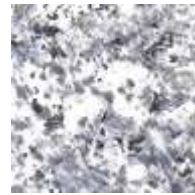
Wenge



Black granite* +



White speckle*



Grey marble+



White marble*+



Green*



Blue*



Yellow*



Black/coffee granite



Dark granite+



Beige+



Light granite



Grey/blue marble+



Gloss black/silver+



Sage marble +



Black/bronze +



Blue/grey fine granite



Sky blue marble



Mixed granite+



Pale blue marbled

+ Hi gloss finish * True laminate

Please note that colours are as accurate as reproduction techniques allow, but may vary slightly from the original. Wooden work surfaces are natural wood and therefore exhibit variations of the natural product.