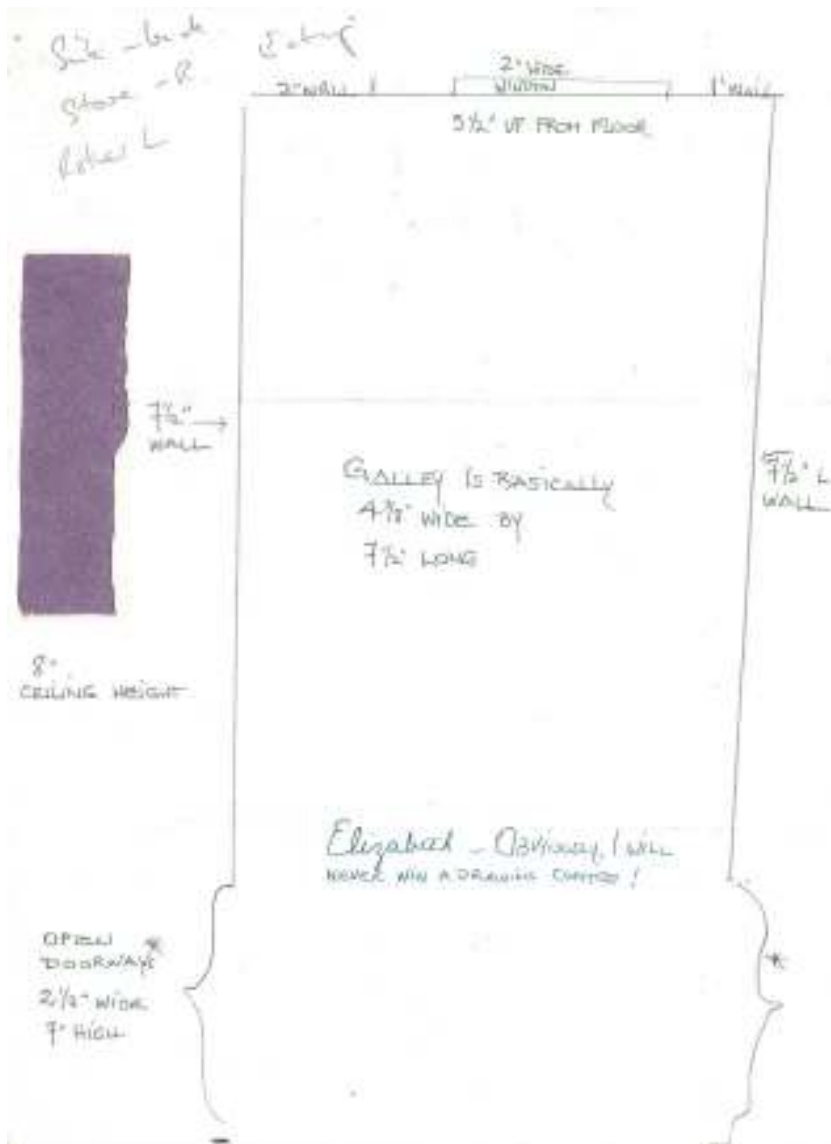


First beginnings...the birth of a kitchen from ELF Miniatures.

Most people find planning ANY kitchen a daunting prospect and think that ordering a bespoke dollhouse kitchen will require from them more technical ability than they have. They have visions of the need for accurate scale drawings and pale at the prospect. In reality very few kitchens start with scale drawings, or indeed a clear idea of how it should look.

A new kitchen usually begins with a letter, or an email, and a drawing, sometimes quite elaborate, occasionally drawn to scale in the finest detail, but most often just a rough sketch such as the one reproduced here.



As the client herself notes **“I will never win a drawing contest!”** However, she continues...

“...My reason for writing is that I would like a kitchen by you for a new project, a houseboat! The emphasis will be on “house” rather than boat.

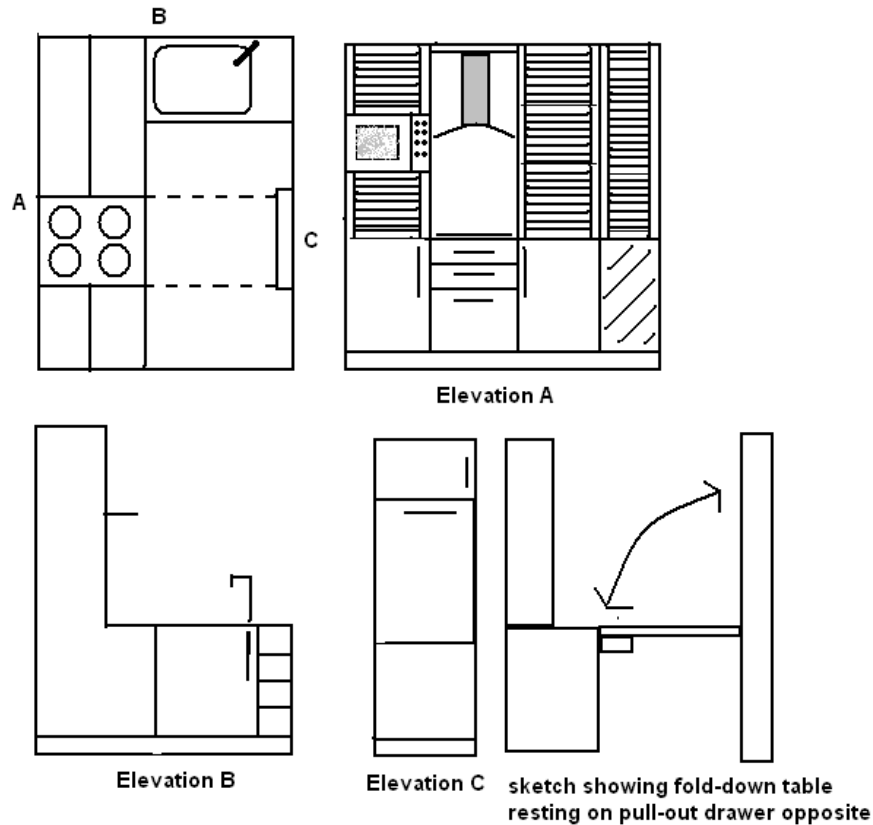
It’s to have a galley-type kitchen and the size of the room is miniscule: 7½ inches long x only 5 inches wide and there’s a window almost centred on the short side.

On your Website I love the chic kitchen in cherry with steel roller-shutters et al...will probably opt for black and steel....”

The client also sent a couple of samples of the wall coverings she intended using in the adjacent rooms to give an idea of the overall colour scheme, and one or two more “must-have’s”, which included an eating area – not an obvious option in such a confined space!

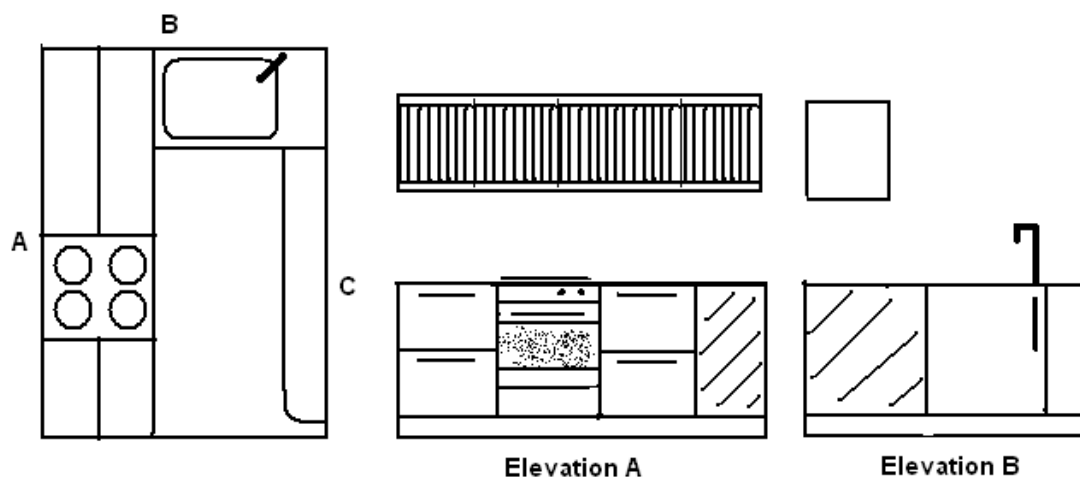
This simple sketch (ignoring the apparently converging walls!) and brief outline of the sort of style the client was looking for formed the basis for the first plans. The notes in the top left hand corner of the sketch were added as an “aide-memoire” to include the essentials in the plans. The initial plans and quotes are shown on the next page with a summary of the attached notes.

PLAN 1



This plan includes the requested shutters, and instead of a traditional oven, a built-in microwave, and stove top over a set of drawers. The top drawer also functions as a support for a drop-down table, housed in a shallow unit opposite. The sink unit (an underslung sink to reduce the amount of space required) is under the window and has the addition of a narrow wine rack. Price as shown £295

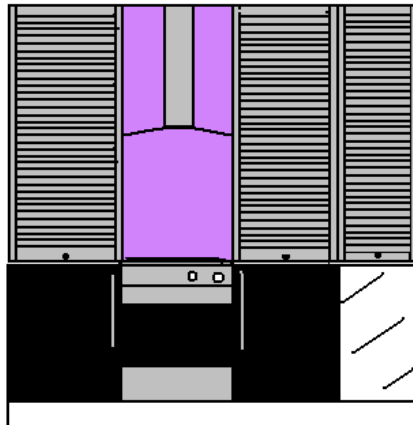
PLAN 2



Plan 2 has an oven flanked by two sets of drawers on the left, and the shutter unit is horizontal instead of vertical. The sink is again under the window, but the wine rack has been removed to create space for the breakfast bar along the right hand side. In black and steel, £190.

The client indicated that she liked the left hand side of Plan 1, but the right hand side of Plan 2, so after one or two more emails to clarify the details we arrived at a plan combining elements of both plans. It's often much easier to decide what you want with something to build on, rather than staring at a blank piece of paper hoping for inspiration! So, while an initial plan may be modified significantly, it forms the basis of a dialogue between designer and client allowing them to work together to arrive at the definitive plan.

Quite by chance at this stage in the process, a magazine article provided the inspiration for bringing in the rich mauve of one of the wall coverings, and creating a full height splashback behind the hob, which was echoed by a shallow splashback behind the sink up to the level of the window, running right around the right hand side behind the breakfast bar (taken from Plan 2).



So from the plan to the execution...below is the finished kitchen (the picture doesn't show the breakfast bar, which was mounted opposite the main units).



And to end, perhaps most important of all, the client's comments, **"Your kitchen is installed in it's room and it looks truly fabulous! I am so very delighted...everything fits perfectly, even with my giving you problems with my wild measuring. Can hardly wait for the next big miniatures show to purchase the 'extras' that make mini rooms 'sing'. Thank you...thank you...thank you. B"**