

ELF Kitchens

Bespoke kitchens – Mornington Range Supplement.

The MORNINGTON range offers you a wide choice of units in varying sizes with the same quality as the standard ELF bespoke range, but with fixed doors, giving you the kitchen you want at a readily affordable price. Choose from a wide range of finishes and add open shelving to show off your favourite miniatures.

COMPARE WHAT WE OFFER WITH OTHER MODERN KITCHEN RANGES – see P4

**double base unit, metal sink
and steel drawers...all for £45!**

**wall cabinet AND shelf unit
together only £25!**



The total price for this kitchen is £175. The left hand base units cost £60 (£25 for the drawers – with aluminium fronts, £25 for the cabinet and corner section, and £10 for the open shelf unit) the right hand base section £45 (one of our standard “blocks” with double cupboard, real metal sink and drawers, again with aluminium fronts), the left hand wall unit £45 (£15 for the single wall unit, £20 for the corner cabinet, and £10 for the open shelf), and the right hand wall units just £25 (£15 for the cabinet, £10 for the open shelf).

As with all our kitchens, you can pay for your Mornington kitchen in instalments at no extra cost.

ELF Kitchens - MORNINGTON range

Available in the same finishes as the main bespoke range, but doors and drawers remain fixed. Please note that while it is not generally possible to combine units from the main range with those of the Mornington Range, the opening tall display cabinet CAN be combined with Mornington units. You can also, for example, choose Mornington units for the base cabinets, and bespoke ones for the wall units. Choose from the following standard cabinets.

Base Units	Unit price Plain	Unit price Painted/panelled
1½" or 2" wide	20	25
3" two door	25	30
Sensor Hob 2" or 3" (can go above any base unit)	3	3
3" + American sink + ELF mixer tap or American gas hob	35	40
Corner unit 3" (with 1" door) or 3½" (with 1½" door)	25	30
1 ½" or 2" base + 3 or 4 plain or 2 panelled drawers	25	30
3" or 3 ½" + 1 door and set of drawers (4 plain or 2 panelled)	30	35
2" or 3" built-in oven unit with sensor hob** (with interior shelf and removable front).	40	40
2" or 3" built-in oven (non-opening) with sensor hob	25	30
Tall larder unit 1 ½" wide	25	30
Column unit with oven (non-opening) + two doors	35	40
Wine rack (different designs and sizes according to kitchen design)	10 to 30	10 to 30
Open shaped end shelf	10	10
Wall units		
1½" or 2"	15	20
1½", 2" or 3" + shelf	10	10
3" two door	20	25
2" x 2" corner unit – open	15	15
2" x 2" corner unit – with door	20	25
Extractor in steel and etched glass (flat)	20	20
"Glass" shelves (2), supports, and fixing template – up to 8" length	20	20
Open end shelf	10	10

Prices in GBP (UK pounds) For other currencies, click on www.xe.com/ucc entering the amount and selecting GBP on the left, and your chosen currency on the right before pressing "GO"

** Or use freestanding oven (Miele £12 with lights and sounds, Delph £25, gas or electric)

Plain doors include flat doors, and panelled doors that are left in natural wood. Only units that are panelled AND painted incur the higher charge. Please note that as the doors on these units do not open, glass-fronted units are not available (though you may include the tall display unit from the main range in your plan. Prices include worktops, co-ordinating end panels (where necessary) and continuous plinth.

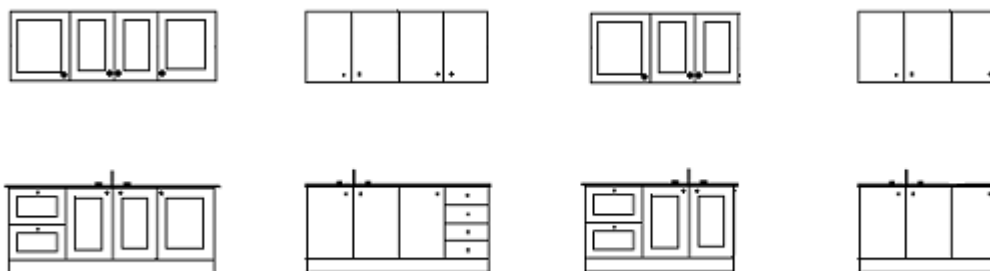
The sink quoted in the price list is the American sink (without drainer). If you wish to substitute with other sinks in the range, calculate the basic cabinet price (3" or 2") and add the cost of the sink you wish to include from the main Bespoke price list.

You may design your own kitchen (or use our free Bespoke design service) or choose from the standard 'blocks' shown on the next page. If you have any queries, please don't hesitate to contact us.

ELF Kitchens - MORNINGTON Range - Standard blocks

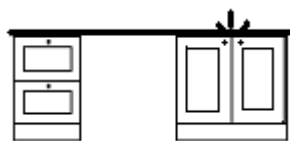
These blocks are available with plain doors or shaker panelled doors in lightwood, or painted any colour you choose. Alternatively, you may also choose a high gloss finish (see chart on the next page). Choose from the range of work surfaces shown in the main Bespoke or kit catalogue (please note that for the following units, a £5 supplement is payable for laminate finishes. All other work surfaces are included in the price).

Wall A – 7¼” max Wall B – 6¼” max Wall C – 5 ¼” max Wall D – 4 ¾” max
(A or B Plain £30/panelled £50) (C or D Plain £25/Panelled £40)



Base A – 7¼” max Base B – 6¼” max Base C – 5 ¼” max Base D 4 ¾” max
(All with sink unit. A, B and C have drawers (4 plain or 2 panelled))

**Base A or B plain £50 or panelled £70, Base C £45 plain, panelled £60,
 Base D £40 plain, £55 panelled. In all cases, £5 extra for painted sink.
 Without sink £10 less. *Laminate top £5 supplement.**



**Base E – 7 ¼” max with space for
 fridge/dishwasher/washing machine
 Plain £60, panelled £75
 (+ £5 with painted sink)
 * laminate top £5 supplement**



Price £135 as shown



Price £85 as shown (+ oven)

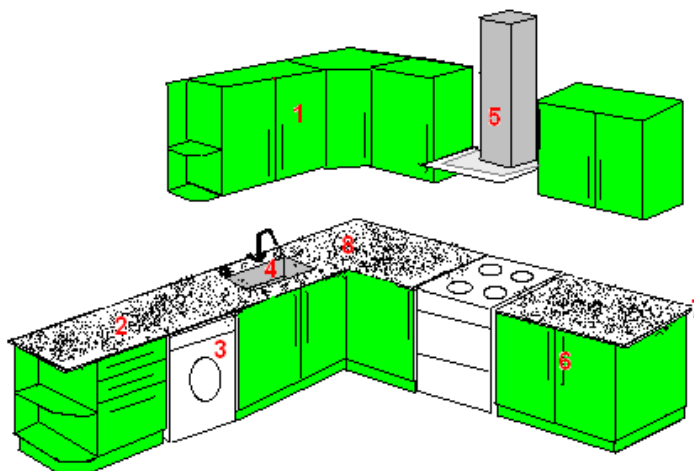
Drawer units comprise three plain or two panelled drawers to co-ordinate with doors and may be supplied left or right as requested.

To order your kitchen simply quote the relevant code (for example, Base A and wall A) and then fill in the finish options you require at the bottom of the form.

Prices in GBP (UK pounds) For other currencies, click on www.xe.com/ucc entering the amount and selecting GBP on the left, and your chosen currency on the right before pressing “GO”

MODERN FITTED KITCHENS – A COMPARISON

**Prices start at £10
for a shelf unit**



1. We offer you an infinite choice of finishes. Natural wood, paint (in ANY colour you choose) or high gloss finishes. You can also opt for panelled doors if you prefer, again in natural wood, or painted in any colour you choose.
2. Choice of worktop finishes. We have TWELVE standard finishes and a range of laminates, plus glass and “stainless steel” (aluminium)
3. We give the choice of adding appliances – and you don’t have to pay anything for the housing.
4. ALL our sinks and taps are real metal.
5. The extractor is real metal and etched “glass”.
6. We offer a choice of handles – four standard ones and others on request.
7. Our kitchens are individually designed and built for YOUR room, so the worktops are continuous and we include overlaps at the end of a run to improve the look of your kitchen.
8. Because our kitchens are built to order you don’t have to pay for a separate corner unit – it is included in the price of the adjacent cabinet.
9. Prices start from as little as £10 and we have standard “blocks” for as little as £40 for three cabinets including the sink – always in your choice of finish.
10. You don’t have to pay for your kitchen all at once*
11. We don’t compromise on quality. Mornington kitchens are built to the same high standards as the ELF bespoke kitchen range.

* We liaise with you to design your kitchen, then we make your kitchen. You pay in instalments, as much (or as little) as you wish, as often as you choose, and on completion of payment, you receive your kitchen...ready to slot into your house, a fully fitted kitchen of your choice, with continuous worktop and plinth – just like the real thing! With the kitchen on the front page, you could receive the blocks one at a time as you pay for them, so you could have the first section with your first payment.

And of course, if you enjoy the satisfaction of creating your own kitchen, our brand new range of EAZI Kitchen Kits is the easy way to get a beautiful kitchen at a really affordable price with units that are extremely simple to make. The FLEXI kitchen kit is even easier, if that were possible, as it gives you three blocks (one single, one double and one triple) with drawers, doors and panels to create a corner, enough worktop to leave spaces for appliances or create an island, and of course a choice of worktops and handles – all for £35 (plain) or £40 (panelled). For both EAZI and FLEXI, see separate catalogues.

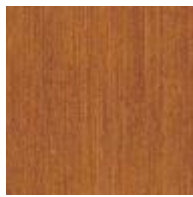
ELF Miniatures - Work-tops (full range)



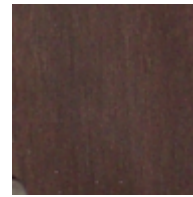
Light Wood



Beech



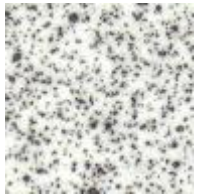
Cherry



Wenge



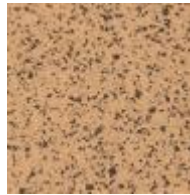
Black granite* +



White speckle*



Glossy White tiles*
(with wood edge strip)



Beige speckle*



Rust speckle*



Grey/beige granite+



Brown*



Green*



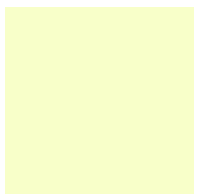
Blue*



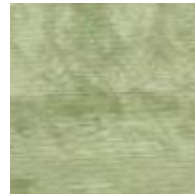
Yellow*



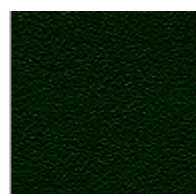
Gloss black/silver granite+



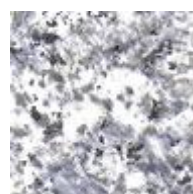
White matt*



Green gloss marble+



Green Leather-grain



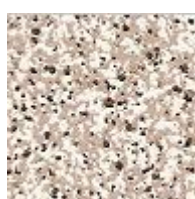
Grey marble*



Silver chequer +



Beige+



Light Granite



Red Leather-grain



Blue Leather-grain



Semi-matt beige

Also available stainless steel. "Glass" (ANY colour)

* denotes high quality laminate

+ denotes gloss finish

Please note that colours are as accurate as reproduction techniques allow, but may vary slightly from the original. Wooden work surfaces are natural wood and therefore exhibit variations of the natural product.

ELF Kitchens – High Gloss finishes

We offer a range of high gloss finishes for ELF cabinets and drawer units, which are illustrated below. In addition to the colours shown, we also have **brilliant white** and **black**. **Turquoise** and **royal blue** are also available (no image currently).



pink



fresh green



blue



grey



yellow



orange



red



dark green



lilac

The colours are as accurate as electronic reproduction allows. We are always happy to supply samples on request.